

Land Use Framework and Regional Planning Update

***Agri-Environmental Partnership of Alberta
Fall Forum***

November 8, 2012



**Government
of Alberta** ■

Presentation Overview

- Departmental restructuring
- Government priorities
- Regional planning – plan elements and status
- Conservation and stewardship tools

Recent changes to Government Department Structure

- Former departments of Environment and Sustainable Resource Development combined into one department → Environment and Sustainable Resource Development
- Diana McQueen – new Minister
- ESRD currently being restructured into a functional organizational model – fewer Divisions along the lines of strategy, policy, planning, operations, corporate support, monitoring and science

Recent changes to Government Department Structure (cont.)

- ESRD organizational structure not finalized, but does include a new Integrated Resource Management Planning Division
 - ❑ ADM Glenn Selland
- Stewardship Commissioner – Glenn Selland
 - Land Use Secretariat (LUS) remains intact and retains previous role and responsibilities
 - ❑ The LUS and the Division have a key role in the development of regional plans which are a key GoA priority

Government of Alberta Priorities

➤ 6 Priority Initiatives

➤ **Integrated Resource System:** sets and achieves the environmental, economic and social outcomes Albertans expect from resource development and maintains the social licence to develop resources.

- ❑ Complete regional plans and the implementation of the Regulatory Enhancement Project, including the development of a single regulator for oil and gas.
- ❑ Develop a world-class monitoring system to provide transparent, reliable information on achievement of outcomes.

Regional Planning is a Government Priority

Purpose –

- Define regional outcomes (economic, environmental and social) and a broad plan for land and natural resource use for public and private lands
- Align provincial strategies and policies at the regional level
- Determine specific trade-offs and appropriate land and natural resource management for specific landscapes within a region
- Define the cumulative effects management approach for the region and identify targets and thresholds

Regional Planning Status...

Land-use Regions

Lower Peace

Upper Peace

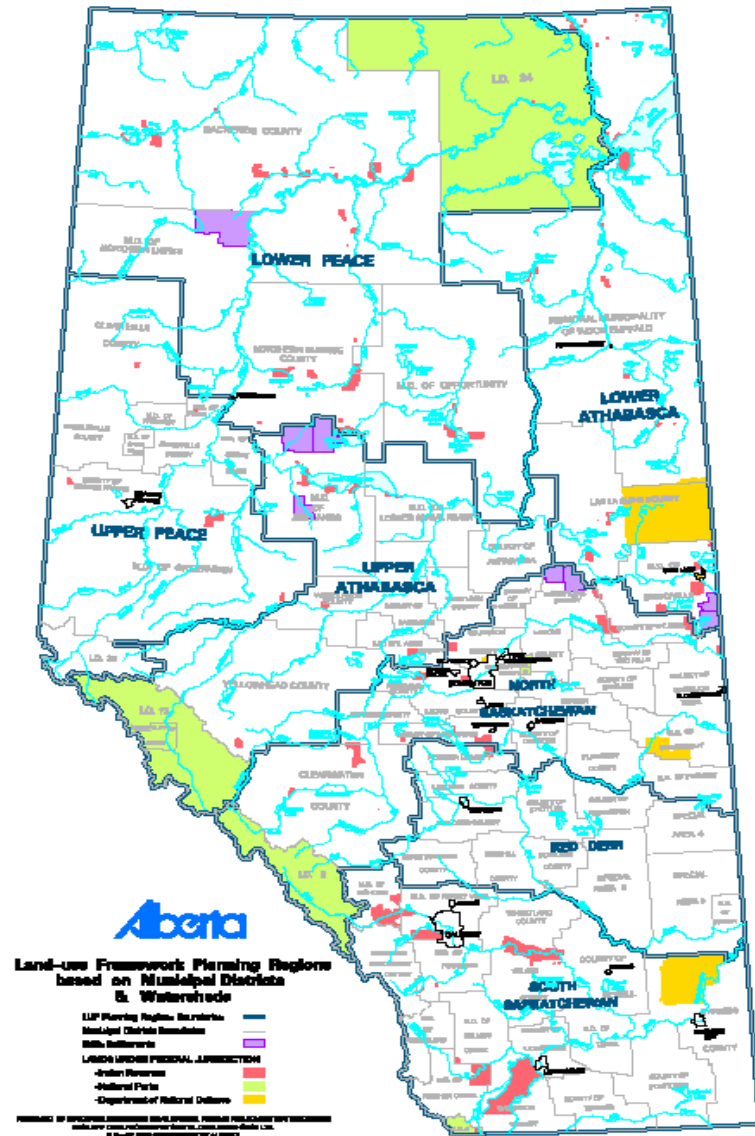
Lower Athabasca

Upper Athabasca

North Saskatchewan

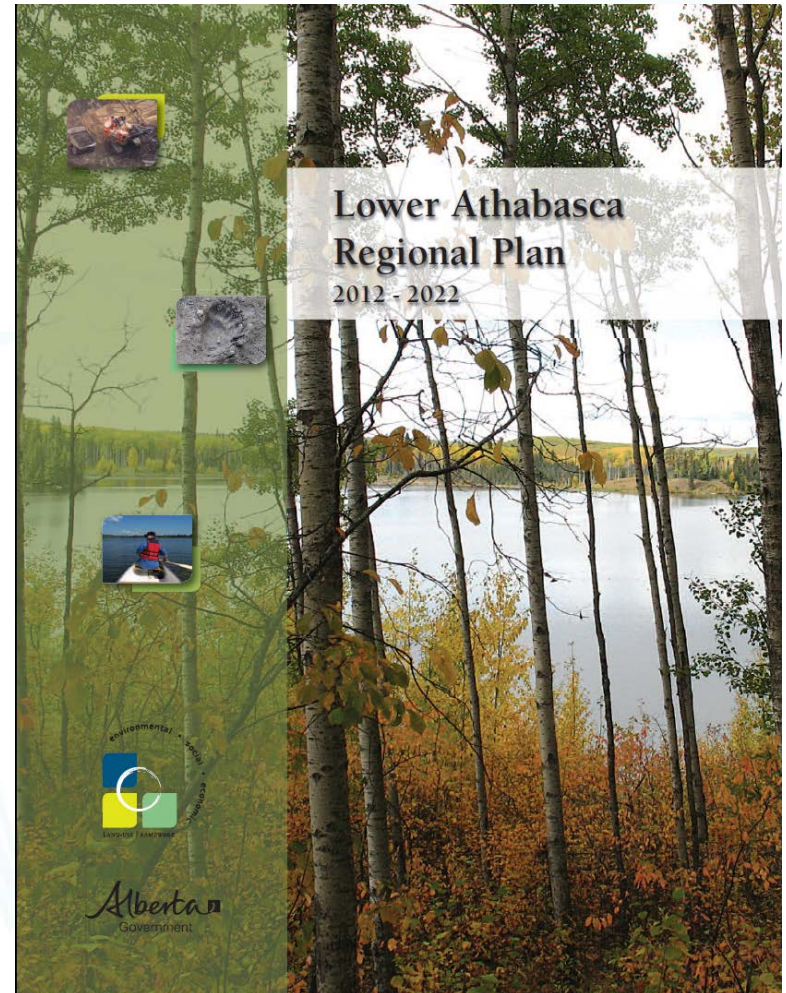
South Saskatchewan

Red Deer

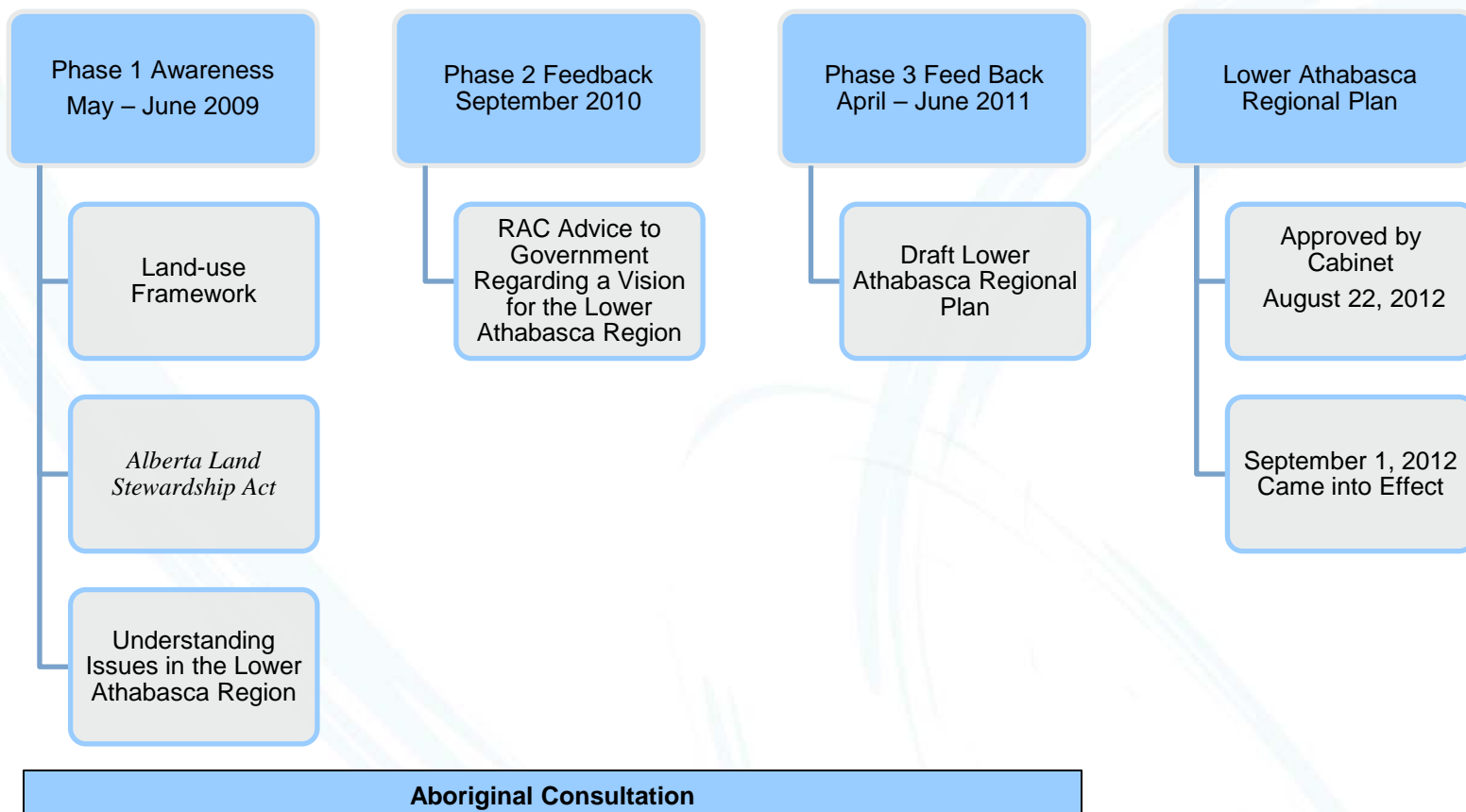


The Lower Athabasca Regional Plan

- LARP is the first regional plan to be developed under the Land-use Framework.
- Approved on August 22, 2012
- Came into legal effect September 1, 2012 – implementation underway



Regional Plans Consultations Sequence



Highlights of LARP - Structure

The structure of the regional plan is unique in that it provides both policy direction and regulatory detail

Strategic and Implementation Plan:

- Strategies and Actions that will be undertaken to support achieving the Vision and Outcomes and includes indicators to measure and evaluate progress. (Policy Direction - must be considered by decision makers but not binding)

Regulatory Details Plan:

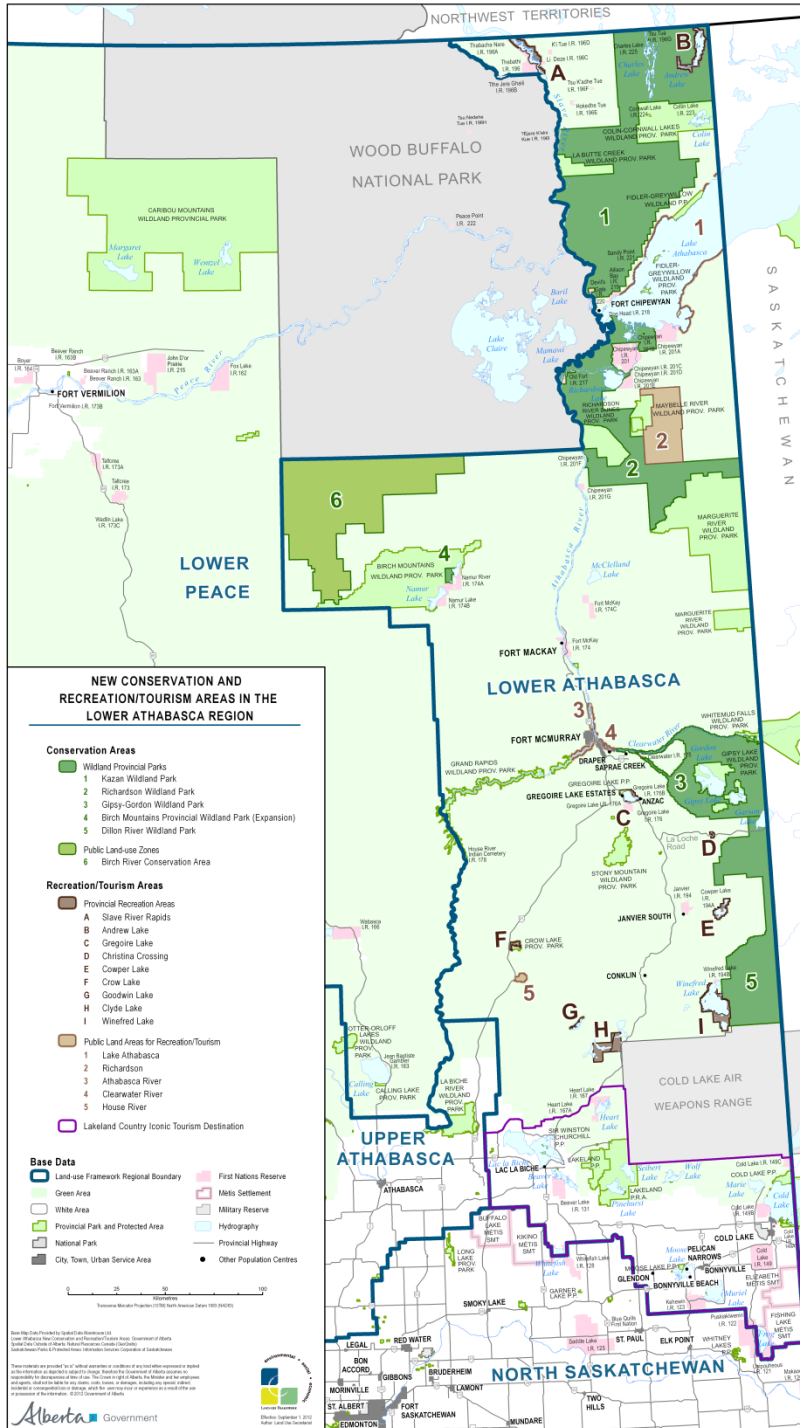
- Enables the achieving the strategic direction and strategies and actions. (Is binding on decision makers)

Highlights of LARP – Strategic Directions

1. Improving Integration of Industrial Activities
2. Encouraging Timely and progressive Reclamation
3. Managing Air, Water and Biodiversity, and Minimizing Land Disturbance
4. Creating New Conservation Areas
5. Strengthening Infrastructure Planning
6. Providing New Recreation and Tourism Opportunities
7. Inclusion of Aboriginal Peoples in Land-use Planning

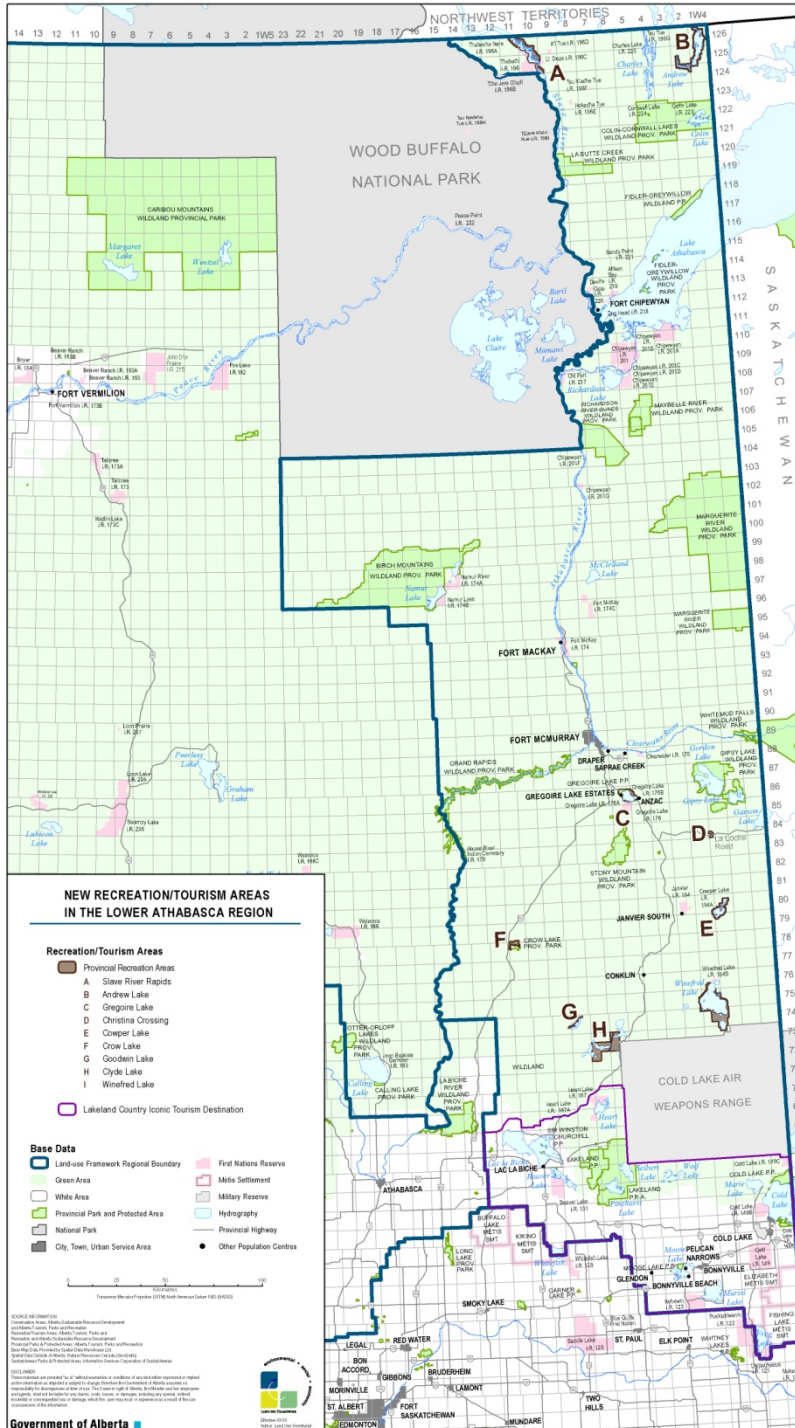
Highlights of LARP - Conservation areas

- Six per cent of region conserved today – Wildland Parks.
- New conservations areas would legislatively protect ~22 per cent or two million hectares.
- Have minimal existing disturbance.
- Managed to achieve the long-term conservation of biological diversity and ecosystem processes.



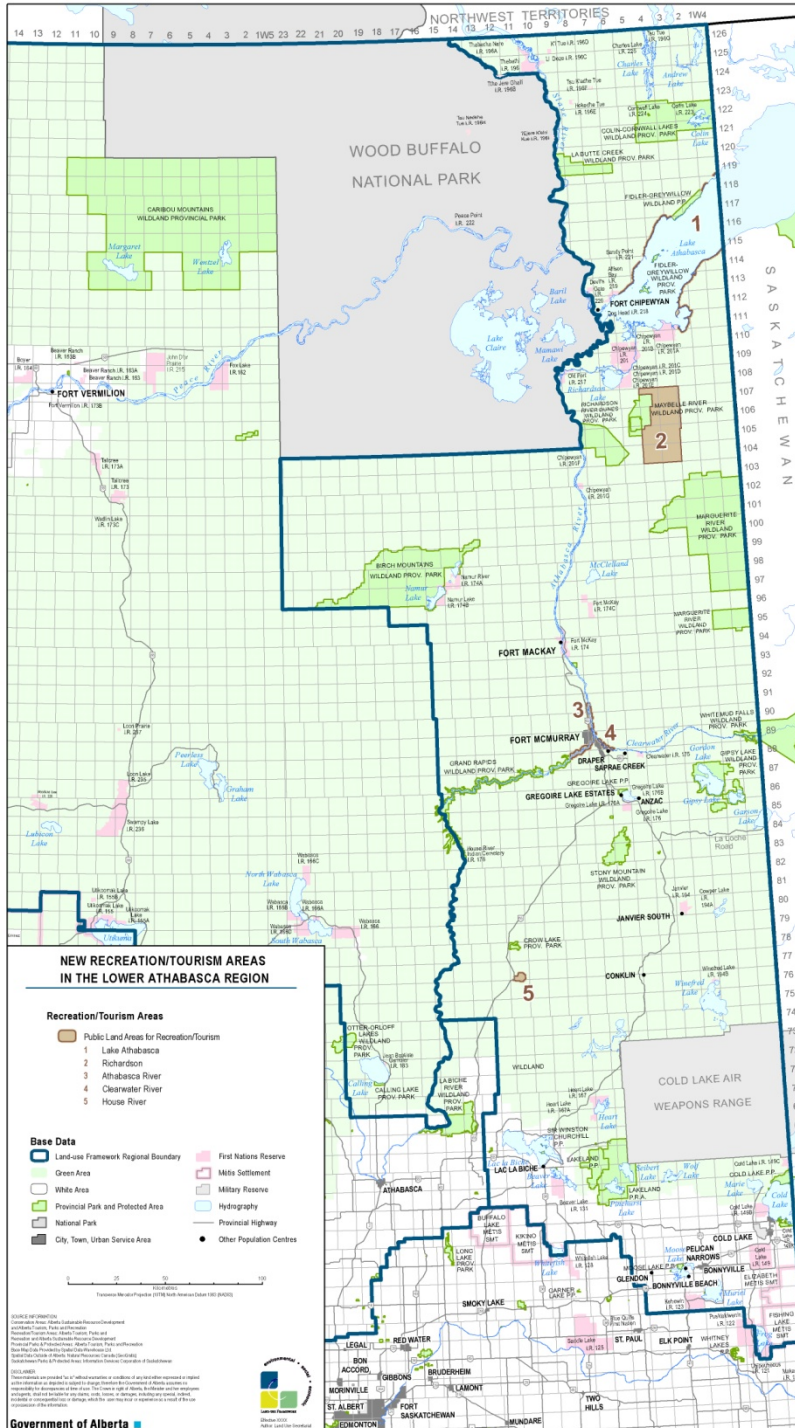
Highlights of LARP - Provincial Recreation Areas

- 9 new provincial recreation areas to be included in the provincial parks system.
- Generally small parcels of land surrounding lakes or rivers.
- Will help address growing demand for recreational opportunities in the region.
- Will allow for future growth in the region and provide recreation opportunities such as:
 - campgrounds and boat launches;
 - motorized staging areas and trails;
 - private sector lodges and cabins.



Highlights of LARP - Public land areas for recreation and tourism

- Five areas chosen because of their unique features or settings for recreation and tourism sectors.
- On a case-by-case basis, minimize negative impacts to recreation/tourism values (e.g., features, recreation/tourism leases and recreational settings).
- Up-front planning and design could create better long-term opportunities for future recreation.



Environmental Management Frameworks

- Approach to managing cumulative effects of human development on air, water, and biodiversity at a regional scale
- Enhancement to current system of air and water management
- Designed to avoid exceeding limits
 - Triggers allow time for pro-active response
- Elements of frameworks included in regional plan regulatory details
- Stakeholders involved in development, and implementation

What are Environmental Management Frameworks?

- Provide regional context for decisions about future activities and management of existing activities.

Indicators, Triggers and Limits

- Indicators are chosen
- Triggers and limits are set

Monitoring and Modelling

- Ongoing monitoring and assessment of conditions relative to triggers and limits

Management Response and Reporting

- Management actions taken as needed at triggers and limits
- Results reported

Highlights of LARP Environmental Management Frameworks

Management Frameworks

- Complete:
 - Air Quality Management Framework for the Lower Athabasca Region;
 - Surface Water Quality Management Framework for Lower Athabasca River.
- Approved approach with triggers and limits to be developed:
 - Groundwater Management Framework for the Lower Athabasca Region.
- Approved for development:
 - Updated Surface water quantity management framework for the Lower Athabasca River by 2012
 - Biodiversity Management Framework and Land Disturbance Plan by 2013 (green area).



Highlights of LARP - Regional Strategic Assessment

- An in-depth assessment of cumulative effects and mitigation strategies for the South Athabasca Oil Sands area (SAOS)
- Area contains majority of future in-situ oil sands development
- Federal/Provincial partnership with Canadian Environmental Assessment Agency (CEAA) and ESRD
- Will achieve:
 - ❑ Improved provincial/federal approach to cumulative effects assessment and integrated resource management
 - ❑ Regulatory enhancement (streamlining)
 - ❑ A sub-regional landscape plan and biodiversity framework for this portion of the region

The South Saskatchewan Regional Plan

- RAC advice and online workbook were released for public review in March 2011
- Progress has been affected by political events and other initiatives (e.g., Property Rights Task Force)
- Next steps complete Phase 2 public and stakeholder sessions, development of management frameworks, preparation of a draft regional plan

YOU HAVE A ROLE. JOIN THE CONVERSATION.

The South Saskatchewan Regional Plan will focus on ensuring this region remains strong and vibrant. Your input will help shape this plan. Attend a session in your community.
It's your land, your plan, your future.

Provide input today by visiting landuse.alberta.ca or calling toll free 310-4455

Tuesday, November 6

Cardston

Cardston and District Seniors Centre
260 - 1 St. W

Tuesday, November 6

Red Deer

Sheraton Red Deer Hotel
3310 - 50 Ave.

Wednesday, November 7

Taber

Heritage Inn
4830 - 46 Ave., Hwy #3

Thursday, November 8

Vulcan

Legion Hall
240 Sinclair Road

Tuesday, November 13

Calgary

Radisson Hotel Calgary Airport
2120 - 16th Ave., NE

Thursday, November 15

Edmonton

Ramada Conference Centre
11834 Kingsway Ave.

Tuesday, November 20

Airdrie

Best Western Regency Inn
121 Edmonton Trail SE

Tuesday, November 20

Pincher Creek

Heritage Inn Hotel & Convention Centre
919 Waterton Ave., Hwy. #6

Wednesday, November 21

Canmore

Radisson Hotel and Conference Centre
511 Bow Valley Trail

Wednesday, November 21

Milk River

Heritage Hall
213 Main Street

Thursday, November 22

Cochrane

The Ranchehouse
101 Ranchehouse Road

Thursday, November 22

Brooks

Lakeside Leisure Centre - Flexhall
111 - 4th Ave., West

Tuesday, November 27

Claresholm

Claresholm Community Centre, North Hall
5940 - 59th Ave. W

Wednesday, November 28

Okotoks

Foothills Community Centre
4 204 Community Way

Thursday, November 29

Strathmore

Strathmore Centennial Civic Centre
120 Brent Boulevard

Tuesday, December 4

Drumheller

Canaita Jurassic
1103 Highway 9 South

Tuesday, December 4

Blairmore/Crowsnest Pass

Elks Hall - Blairmore
2025 - 129 St

Wednesday, December 5

Medicine Hat

Medicine Hat Lodge
1051 Ross Glen Drive SE

Wednesday, December 5

Foremost

Foremost Community Hall
802 - 1 Ave. W

Thursday, December 6

Lethbridge

Coast Lethbridge Hotel
526 Magrath Drive S

All sessions run from 4 - 8 p.m.

The South Saskatchewan Regional Plan will focus on ensuring this region remains strong and vibrant. Your input will help shape this plan. Attend a session in your community.
It's your land, your plan, your future.

Provide input today by visiting landuse.alberta.ca or calling toll free 310-4455

Tuesday, November 6

Cardston

Cardston and District Seniors Centre
260 - 1 St. W

Tuesday, November 6

Red Deer

Sheraton Red Deer Hotel
3310 - 50 Ave.

Wednesday, November 7

Taber

Heritage Inn
4830 - 46 Ave., Hwy #3

Thursday, November 8

Vulcan

Legion Hall
240 Sinclair Road

Tuesday, November 13

Calgary

Radisson Hotel Calgary Airport
2120 - 16th Ave., NE

Thursday, November 15

Edmonton

Ramada Conference Centre
11834 Kingsway Ave.

Tuesday, November 20

Airdrie

Best Western Regency Inn
121 Edmonton Trail SE

Tuesday, November 20

Pincher Creek

Heritage Inn Hotel & Convention Centre
919 Waterton Ave., Hwy. #6

Wednesday, November 21

Canmore

Radisson Hotel and Conference Centre
511 Bow Valley Trail

Wednesday, November 21

Milk River

Heritage Hall
213 Main Street

Thursday, November 22

Cochrane

The Ranchehouse
101 Ranchehouse Road

Thursday, November 22

Brooks

Lakeside Leisure Centre - Flexhall
111 - 4th Ave., West

Tuesday, November 27

Claresholm

Claresholm Community Centre, North Hall
5940 - 59th Ave. W

Wednesday, November 28

Okotoks

Foothills Community Centre
4 204 Community Way

Thursday, November 29

Strathmore

Strathmore Centennial Civic Centre
120 Brent Boulevard

Tuesday, December 4

Drumheller

Canalta Jurassic
1103 Highway 9 South

Tuesday, December 4

Blairmore/Crowsnest Pass

Elks Hall - Blairmore
2025 - 129 St.

Wednesday, December 5

Medicine Hat

Medicine Hat Lodge
1051 Ross Glen Drive SE

Wednesday, December 5

Foremost

Foremost Community Hall
802 - 1 Ave. W

Thursday, December 6

Lethbridge

Coast Lethbridge Hotel
526 Magrath Drive S

All sessions run from 4 – 8 p.m.

Next Regional Plans

- Process and sequencing of remaining plans under discussion

Questions?

Website:

<http://www.landuse.alberta.ca>

