

Red Deer River Watershed Alliance (RDRWA) – Building Relationships

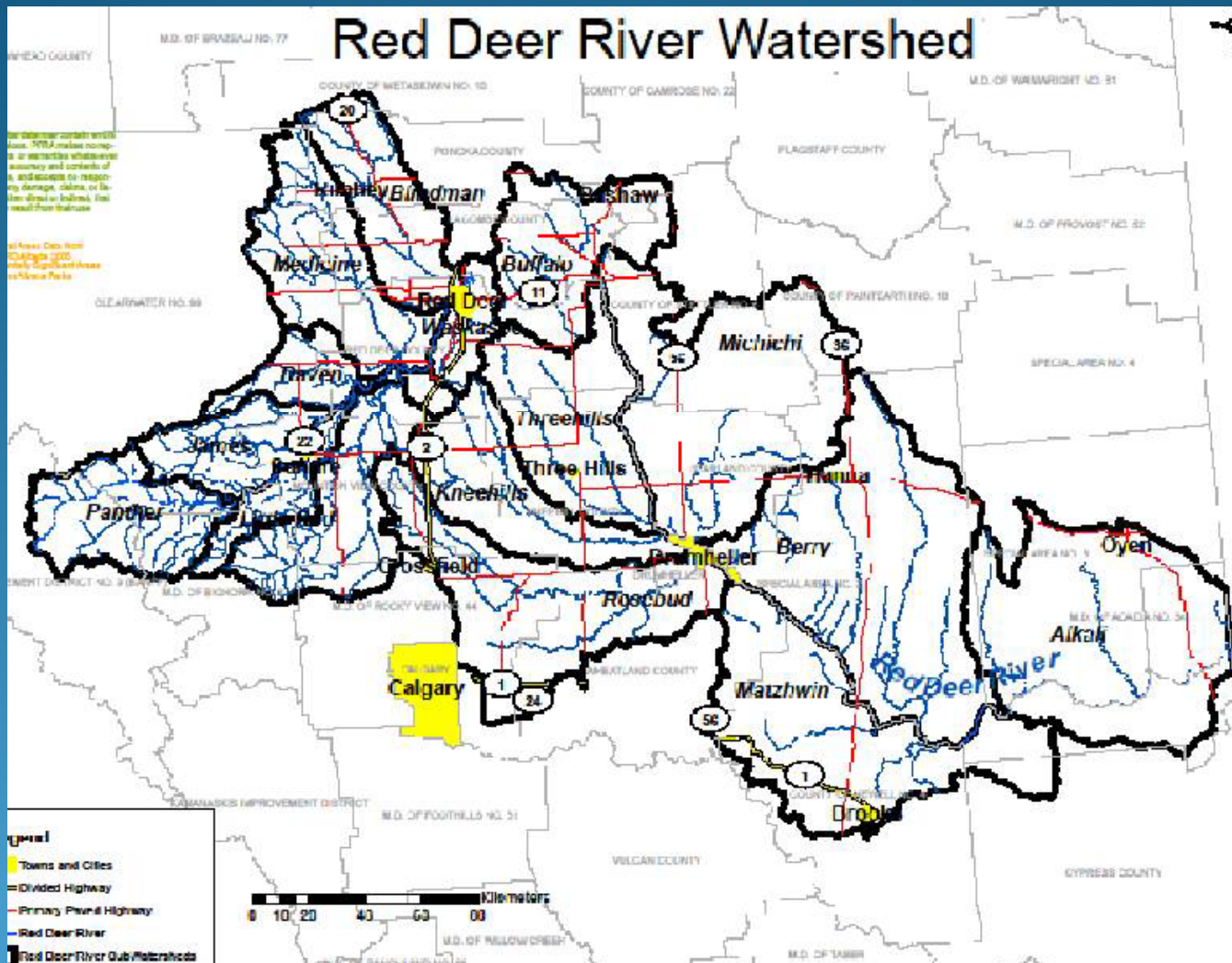


Gerard Aldridge
Executive Director
March 15, 2011

Background

The Red Deer River Watershed Alliance is:

- Multi-sector, non-profit, inclusive, collaborative partnership promoting a **healthy watershed** toward ensuring a legacy of ecological integrity and economic sustainability
- Formed in 2005
- 16 Board of Directors elected from membership
- Staff - 3
- Designated the Watershed Planning and Advisory Council (WPAC) in 2005 under the Water For Life Strategy



49,000 sq. km

Length of the river 724 km

Encompasses about 80 municipalities - parts or all of 19 counties / MD / ID and approx 60 urban municipalities

Water for Life Partnership

Provincial: Alberta Water Council

Regional: Watershed Planning and Advisory Councils

Athabasca Watershed Council

Battle River Watershed Alliance

Beaver River Watershed Alliance

Bow River basin Council

Lesser Slave Lake Watershed Council

Milk River Watershed Council Canada

North Saskatchewan Watershed Alliance

Oldman Watershed Council

Red Deer River Watershed Alliance

Mighty Peace Watershed Alliance - 1st AGM, March 18th

Local: Watershed Stewardship Groups

Water for Life - WPACs will:

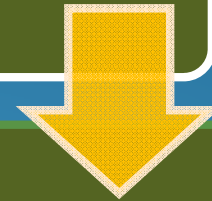
- Lead in **Watershed Planning**
- Develop **Best Management Practices**
- Foster **Stewardship Activities** within the watershed
- Report on the **State of the Watershed**
- **Educate** users of the water resource

EDUCATE, ADVISE & INFORM

Planning Process

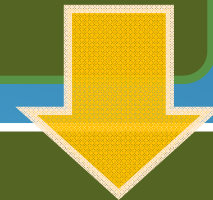
State of the Watershed Report

[Indicators & Data Gaps]



Integrated Watershed Management Plan

[Targets & Thresholds, Recommendations for implementation]









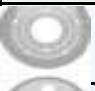






Stakeholder Implementation

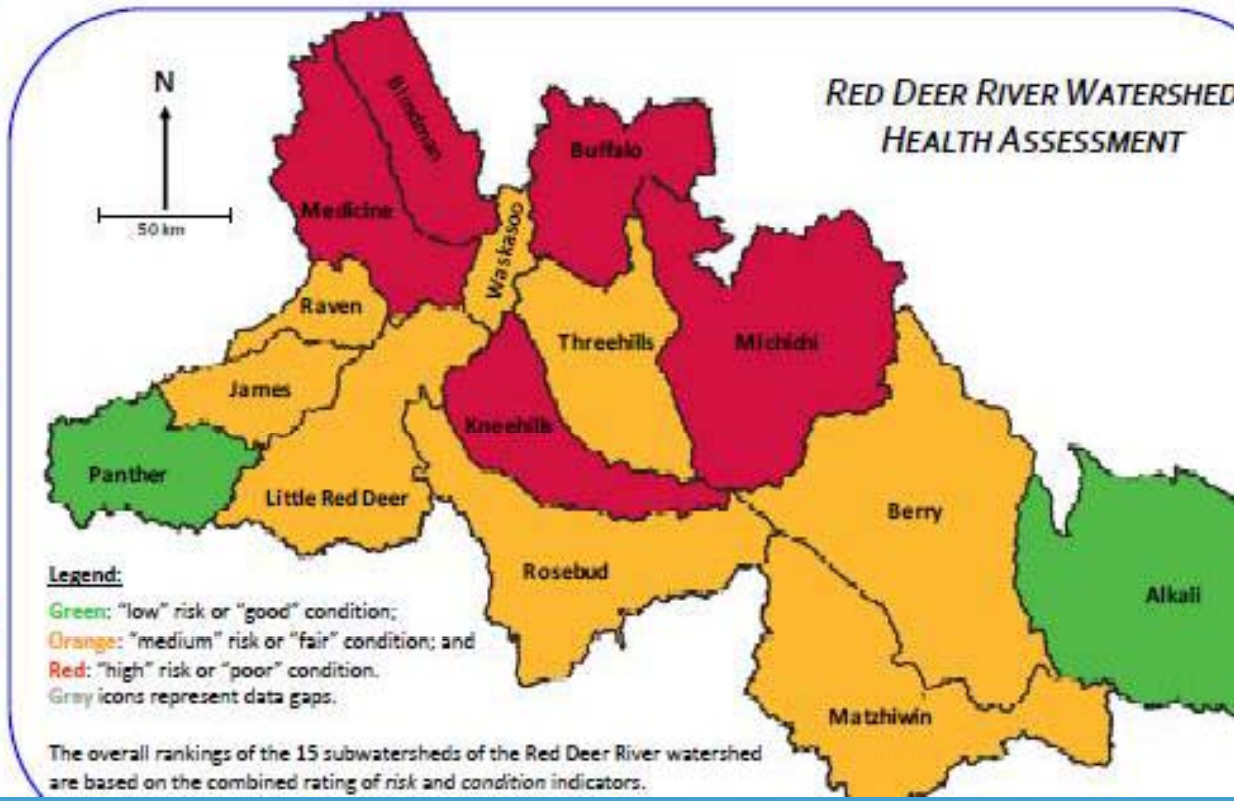
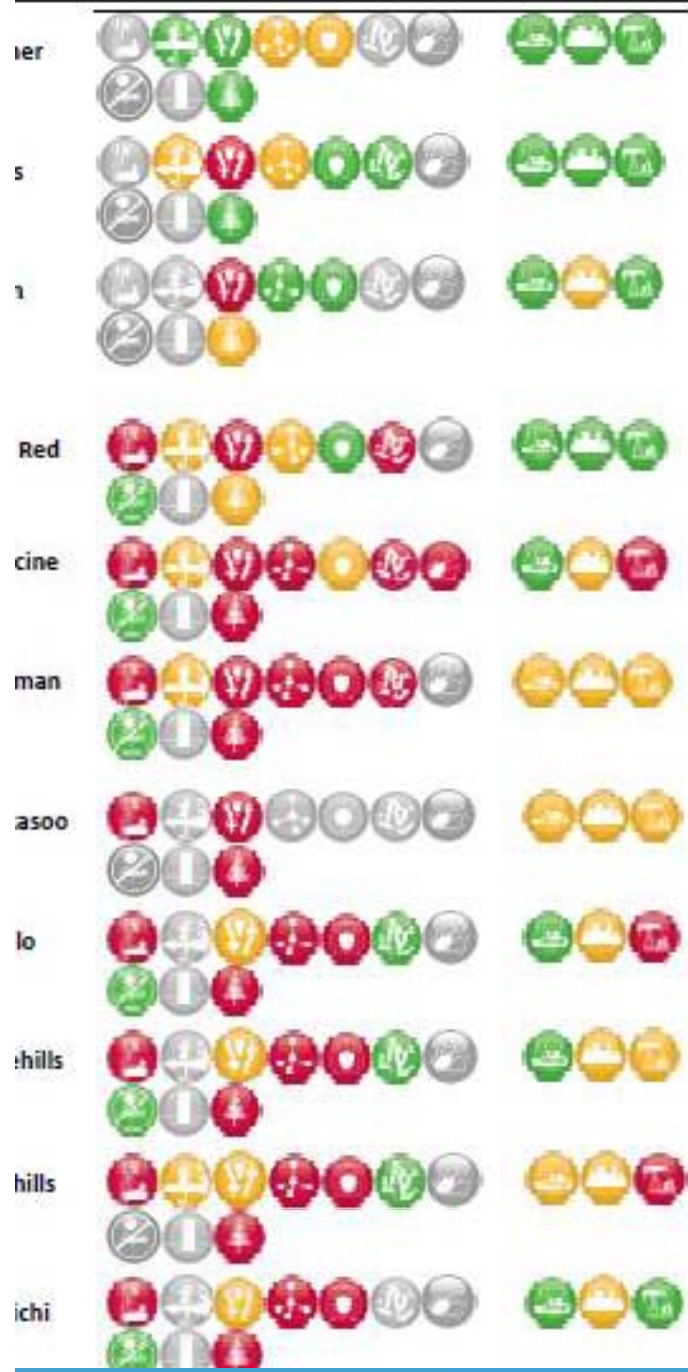
Support Land Use Framework

Support Water for Life Strategy



The Final List of Indicators

Condition Indicators	Risk Indicators
 Wetland Loss*	Manure Production* 
 Riparian Health*	Urban, rural, agricultural and recreational developments 
 Linear Developments*	Oil and Gas Activity 
 Total Nitrogen*	
 Total Phosphorus*	
 Bacteria*	
 Parasites*	
Pesticides* 	
Water Levels 	
Land Cover* 	



Watershed Data Gaps (SOW)

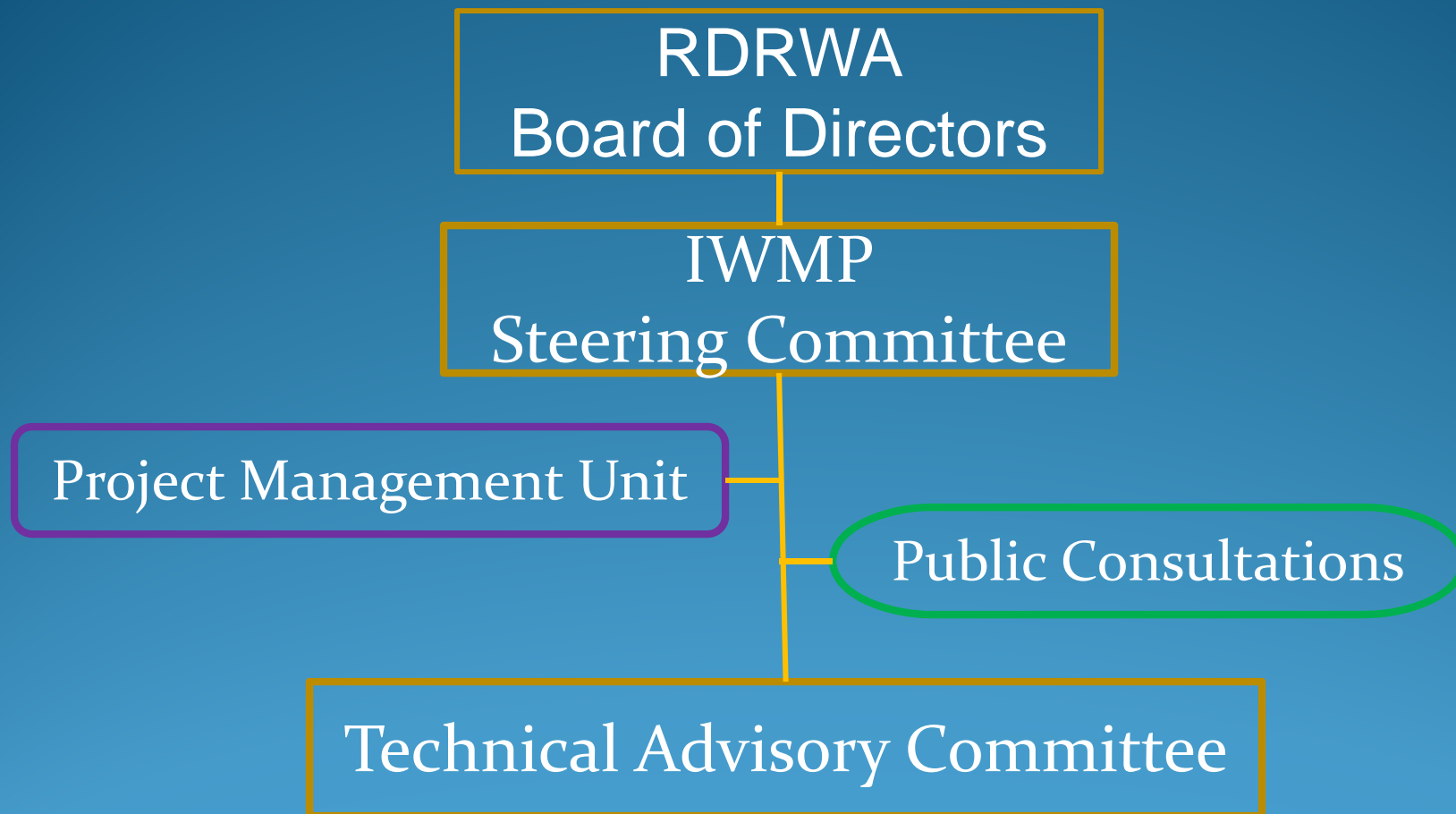
	Condition Indicators									Risk Indicators			Information Parameters						
Sub-watershed	Wetland loss	Riparian health	Linear decay	Total N	Total P	Bacteria	Parasites	Pesticides	Minimum Flow	Land Cover	Manure Prod	Urban, Rural, Agric	Oil & Gas	Point Sources	Water Volume(Flow)	Fish	Wild life Biodiversity	SAR	ESAs
Arner	x	x				x	x	x	x						x	x	x		x
Arnes	x						x	x	x								x		
Arner	x	x				x	x	x	x								x		
Arner									x								x		x
Arner							x		x								x		
Arner							x		x								x		
Arnes		x		x	x	x	x	x	x							x	x		x
Arnes		x					x		x								x		
Arnes		x					x		x								x		
Arnes							x	x	x								x		x
Arnes		x				x	x		x								x		
Arnes		x					x	x	x								x		
Arnes	3	0		1	1	4	14	0	15						1	6	15		4

Watershed Data Gaps - Growing Challenge

Open 2007. Data gaps identified previously are also shown (x).

Watershed	Condition Indicators									Risk Indicators				Information Parameters						
	Wetland loss	Riparian health	Linear dev	Total N	Total P	Bacteria	Parasites	Pesticides	IFN	Land Cover	Manure Prod	Rec dev	Urban, Rural Agric Rec dev	Oil & Gas	Point Sources	Water Volume	Fish Community	wild life Biodiversity	SAR	ESAs
ther	x	x		y	y	x	x	x	x							x	x	x		x
nes	x			y	y	y	x	x	x									x		y
en	x	x		y	y	x	x	x	x									x		y
cline	y			y	y	y		y	x									x		x
man	y			y	y	y	x	y	x									x		y
Red er	y			y	y	y	x	y	x									x		y
asoo	y	x		x	x	x	x	x	x								x	x		x
alo	y	x		y	y	y	x	y	x									x		y
ehills	y	x		y	y	y	x	y	x									x		y
ehill	y			y	y	y	x	x	x								x	x		x
ichi	y	x		y	y	x	x	y	x								x	x		y
bud	y			y	y	y	x	y	x								x	x		y
ry	y	x		y	y	y	x	x	x									x		y
hiwin	y	x		y	y	y	x	x	x									x		y
ali	y	x		y	y	y	x	x	x								x	x		y
al	15	8		15	15	15	14	15	15								6	15		15

IWMP Committee Structure



Where we've been with planning:

2009	
November	Steering Committee & Project Management Unit established
2010	
January	Stakeholder Workshops on the IWMP Terms of Reference
March	Terms of Reference Approved by the RDRWA Board of Directors
May	First Meeting of the Technical Advisory Committee
June	Formal Launch of the IWMP process – Hon. Rob Renner
September	1st Education Forums – Community Advisory Workshops
October	2nd Education Forums – Community Advisory Workshops

Where we're heading, with your help😊

2011/12	
January 25 th -26 th	Community Workshops on Problems and Issues
April 26 th – 28th	Community Workshops on Solutions to Problems and Issues
By August 31	Methodology Report for Developing Targets, Thresholds, and Recommendations
By October 31	Partnership Engagement Strategy with Emphasis on Developing Partnerships for Filling Priority Data Gaps
By January 31, 2012	Stakeholder Engagement
By March 31, 2012	Interim Report on Region 1 Targets and Thresholds with Related Recommendations

AEPA/RDRWA - Our Relationship

To be successful, we need you to be fully engaged in the watershed planning process. To accomplish **a healthy watershed, everyone has a role.**

As it relates to the Land Use Framework, the IWMP will form a key foundation piece in the **Red Deer Regional Plan** and with that will come the direction for action under the **Alberta Land Stewardship Act.**



Collaboration is in our futures!

- Participate in the IWMP – help identify problems, issues, and solutions
- Give feedback on draft IWMP recommendations, advising on related beneficial management practices and stewardship activities and to whom best targeted
- Identify funding partners to help fill data gaps

AEPA & RDRWA





The relationship we develop over time by collaborative efforts, when combined with others, will be instrumental in AEPA and RDRWA realizing on our respective visions!

Visit: www.rdrwa.ca

Follow us on twitter: @RDRWA

We are on Facebook